



# VOICES for Art

~ April 2012 ~

THE PUBLICATION OF THE SOUTHWEST MINNESOTA ARTS & HUMANITIES COUNCIL, INC.

## Join us! SMAHC Artist Retreat: May 5, 2012



Calling all artists... save the date to join SMAHC on the shores of St. Andrew just outside New London for a day filled with workshops and activities. While the workshops begin Saturday morning and run through the day, there will also be the option for artists to gather together for networking and other fun activities the previous evening and stay in the cabins available on-site. **Saturday's workshop sessions will be led by enthusiastic subject-matter experts and artists of renown.**

Workshop topics include:

- MN Artists Exhibition program
- Social Media
- Documenting your work with photography
- Acting workshop
- Songwriting
- Visual Arts Critique
- Sidewalk Chalk with Shawn McCann
- Faux painting for theatre
- "How to find your artistic vision"
- Marketing your Music



In addition to these workshop sessions, there will be the opportunity for artists to have their work professionally photographed by Greg Harp.



Only \$20 for the entire day of workshops, networking opportunities and meals on Saturday, May 5.

An additional \$45 to stay overnight on Friday, May 4 at one of the cabins on site by the lake. Friday also includes a private reception at the Kaleidoscope Gallery in New London.

**Register now** by calling the SMAHC office at 800-622-5284 or through the online registration system at [www.smahc.org](http://www.smahc.org)  
*Registration fees must be received in advance of the retreat.*



### ***In This Issue...***

<i>SMAHC offices are moving!!</i> .....	2
<i>Grant Deadlines &amp; Workshops</i> .....	2
<i>FEATURE: Spring has sprung with choral music</i> .....	3
<i>Opportunities</i> .....	4
<b><i>SMAHC Gallery Exhibit: Michele Skogrand</i></b> .....	<b>5</b>
<i>Art Study Opportunity for Youth Grants Awarded</i> ...	5
<i>Events Calendar &amp; Gallery Info</i> .....	6 - 7
<b><i>Lucy Tokheim "BOOKFACE" exhibit</i></b> .....	<b>7</b>

## SW MN Arts & Humanities Council offices moving to downtown Marshall “arts district”



An opportunity to move the SMAHC offices to a new location on North 3rd Street in Marshall was unanimously approved by the Board of Directors at the January 24 meeting.

With moving plans in progress, the SMAHC staff and gallery will soon be located in a newly refurbished building in what is called “the Marshall arts district.” The new location will offer a larger gallery with the opportunity to exhibit 3-D artworks such as sculpture and fiber arts. Double the square footage of the former space, this property also offers expanded space for meetings and workshops.

Executive Director Greta Murray said, “We became aware of an opportunity to move the SMAHC office space to downtown Marshall. It’s been a long-time dream of staff to move the offices downtown, but we did not think it was affordable... until this opportunity was presented to us. This will provide more visibility to the public at large and ease of “find-ability” for those specifically trying to locate us. We are excited about the possibility of more artists and arts supporters becoming involved with SMAHC through this move.”

In addition, the downtown location brings a refreshing sense of community involvement. It will mutually benefit both SMAHC and the Marshall Area Fine Arts Council in that two art galleries will now be located on the same street almost directly across from each other.

SMAHC looks forward to serving the artists and arts organizations in the SW MN region from these new facilities and hopes to see you in person soon!

Plan to visit us starting MAY 1 at our new location: 114 North 3rd Street, Marshall

### UPCOMING SMAHC GRANT DEADLINES

- April 1, 2012:  
Art Project Planning
- April 16, 2012:  
Arts in the Schools - Round II  
*Apply Online*
- May 1, 2012:  
Art Project Planning  
Individual Artist - Round II  
*Traditional application*
- May 15, 2012:  
Art Project - Round III  
*Traditional application*



### SMAHC AWARD NOMINATION DEADLINES

- April 1, 2012:  
Prairie Star Award nominations—honoring an outstanding artist  
Prairie Disciple Award nominations—honoring an outstanding arts advocate in education

### GRANTWRITING WORKSHOPS

- Individual Artist Grant Workshop  
March 29, 4:00-6:00 pm  
SMAHC Office, Marshall
- Art Project Grant Workshop  
April 5, 4:00-6:00 pm  
SMAHC Office, Marshall

Workshops are free, but advance registration is encouraged. Contact the SMAHC office (800-622-5284 or smahcinfo@iw.net) to register.

*\*SMAHC grant programs, awards & workshops are made possible in part by appropriations from the Minnesota State Legislature with money from the State’s general fund, and its arts and cultural heritage fund that was created by a vote of the people of Minnesota on November 4, 2008.*

[www.smahc.org](http://www.smahc.org)  
Grant guidelines, links to grant applications, arts calendar, news and contact information

## Spring is in the air... and it sounds like choral music!

*The spring season traditionally is full of choral music events. It's a time to get out of the house and enjoy the sweet sounds of a choir. Amidst the many art opportunities that are showcased in the SMAHC regional art calendar, on our website and in this newsletter, check out the vocal stylings of the following three song groups who are performing in the next couple months:*

### Al Opland Singers: "We're Singing Your Songs"

This choral group started performing in 1978 and continues to impress audiences at the Pipestone Performing Arts Center. The spring show, titled **"We're Singing Your Songs,"** runs two weekends, April 13-15 and April 20-22. Showtimes include Fridays & Saturdays at 7:30 pm, and Sundays at 3:00 pm. For tickets and more information, check: [www.pipestoneminnesota.com/artscenter/](http://www.pipestoneminnesota.com/artscenter/)



AL OPLAND SINGERS



Prairie Arts Chorale

### Prairie Arts Chorale: "Jazz Standards"

The Prairie Arts Chorale prepares two musical seasons each year: the fall concert presents classical and sacred music, while the spring season is selected from folk songs, popular tunes, and musical theater. The group has performed regionally since 1980, rehearses weekly and is open to new singers by audition.

Plan to enjoy one of the five performances of **"Jazz Standards"**. April 20: 7:30 pm at Montevideo Fine Arts Center. April 21: 7:30 pm at the Estebo Performing Arts Center (Redwood Valley High School). April 22: 4 pm at Faith Lutheran Church, Spicer. April 28: 7:30 pm at Unity Christian Reformed Church, Prinsburg. April 29: 4 pm at St. Stephen Lutheran Church, Marshall.

For more information, check: [www.prairieartschorale.org](http://www.prairieartschorale.org)

### Crow River Singers

The Hutchinson local community choir, Crow River Singers, lead by Paul Otte, will perform the 2012 Spring Concerts April 20 and 22. The April 20 concert, held at the Church of St. Anastasia will be 7 PM. April 22, the concert will be held at Peace Lutheran Church in Hutchinson at 2 PM. For more info, visit: [www.crowriverarts.org](http://www.crowriverarts.org)



Crow River Singers

Memberships and Donations Received: Feb. 24 through March 23, 2012

Elaine Hagen, Belview • Debra Hogenson & Douglas Bauman, Brewster • A. Eric Anderson, Cottonwood • Deb Connolly, Danvers • Barbara Lundquist, Dawson • Bev Tellefsen, Granite Falls • Hendricks Community Hospital & Nursing Home, Hendricks • Marya Manfred, Luverne • Klein Bank, Madison • Southwest Area Multi-County Multi-Type Inter-Library Exchange, Marshall • Beverly & Curtis Kenyon, Marshall • Carol Westberg, Montevideo • Renville County HRA/EDA, Olivia • Pipestone Chamber of Commerce • Tatanka Arts, Redwood Falls • Bruce & Beverley Raske, Renville • Mary Jane Mardesen, Rushmore • Dorothy & George Davies, Willmar • David Moody & Mary Catherwood, Willmar • Susan Selden, Wood Lake



## OPPORTUNITIES

Gary, SD Art Show - July 3-4, 2012:

Now accepting booth registrations. \$30/booth, first 15 to sign up will receive space in the ballroom - all others will receive space outside on the resort grounds.. Held at the Buffalo Ridge Resort, 1312 S. Coteau Street, Gary, SD. Contact: Suzanne Fairchild at 507-277-5622 or [rmf@itctel.com](mailto:rmf@itctel.com).

Siouxland Writing Contest

Prose or poetry entries are wanted for the Manfred: Scribe of Siouxland Writing Contest in March and April. Entries can be made in categories of Age 12 and Under, Ages 13 to 18, and Adult. Cash prizes will be awarded and first place winners will be invited to read at the Blue Mounds Writer Series in June or August. Entry forms are available at [www.luvernechamber.com](http://www.luvernechamber.com). Contact [clintw@plumcreeklibrary.net](mailto:clintw@plumcreeklibrary.net) for more information.

Nobles County Art Center Annual Area Art Show

Nobles County Art Center requests entries for their Annual Area Art Show, which will run from April 1 through April 26. **Art must be original and not previously shown at the Nobles County Art Center. An artists' reception will be held Sunday, April 1 from 1:00 to 4:00 pm with a Juror's Critique at 3:00 pm. Jurors will award cash and merit awards. Contact the Nobles County Art Center at 507-372-8245 for registration information.**

Request for Proposals: MN Filmmakers Legacy Grant Fund

The Minnesota Film and TV Board is currently accepting proposals from Minnesota filmmakers who have completed principal photography on a narrative or documentary feature or television project and who are seeking finishing (completion) funds. Application deadline is March 30, 2012. More information is available at [www.mnfilmtv.org/grants](http://www.mnfilmtv.org/grants)

Artists of Minnesota Spring Show at the Hutchinson Center for the Arts

Artists of Minnesota requests entries for their Spring Show at the Hutchinson Center for the Arts, running from May 4-6, 2012. Artists of Minnesota members may submit up to two recent original works. To join Artists of Minnesota, include dues with entry form. Registration deadline April 2. Details at <http://www.artistsofminnesota.org/spshow.html>.

McKnight Artist Fellowships for Visual Artists

The goal of the McKnight Artist Fellowships for Visual Artists program is to identify talented Minnesota visual artists whose work is of exceptional artistic merit and who are at a career stage that is beyond emerging. Each year an independent panel of arts professionals selects the four award winners of \$25,000 each, opportunities to meet with local **and national art professionals, and participating in a group exhibition of the fellows' work in Minneapolis College of Art and Design (MCAD) Gallery**, accompanied by a catalogue. The application deadline is Friday, April 6, 2012 at noon CT. Please contact Kerry Morgan, Program Director, at [gallery@mcad.edu](mailto:gallery@mcad.edu) or 612-874-3667 for more information.

Minnesota Shorts Play Festival Accepting Submissions

The Minnesota Shorts Play Festival is accepting submissions through April 30 for its fourth annual festival, which will be Thursday, Sept. 6, and Friday, Sept. 7, 2012, in Mankato, MN. Short plays must be performed in 15 minutes or less, and must be 15 pages or less. Scripts can be on any topic but remember that the festival is a community performance. Minnesota writers may submit TWO scripts to the festival. Scripts will be judged in May, with 16 winners receiving \$100. Winners must find a director and cast for the play. Go to [www.mnshorts.com](http://www.mnshorts.com) for details. If you have any questions, call Greg Abbott at 507-420-1881 or just send an e-mail to [mnshorts@yahoo.com](mailto:mnshorts@yahoo.com).

Call for Artists: car pARTs

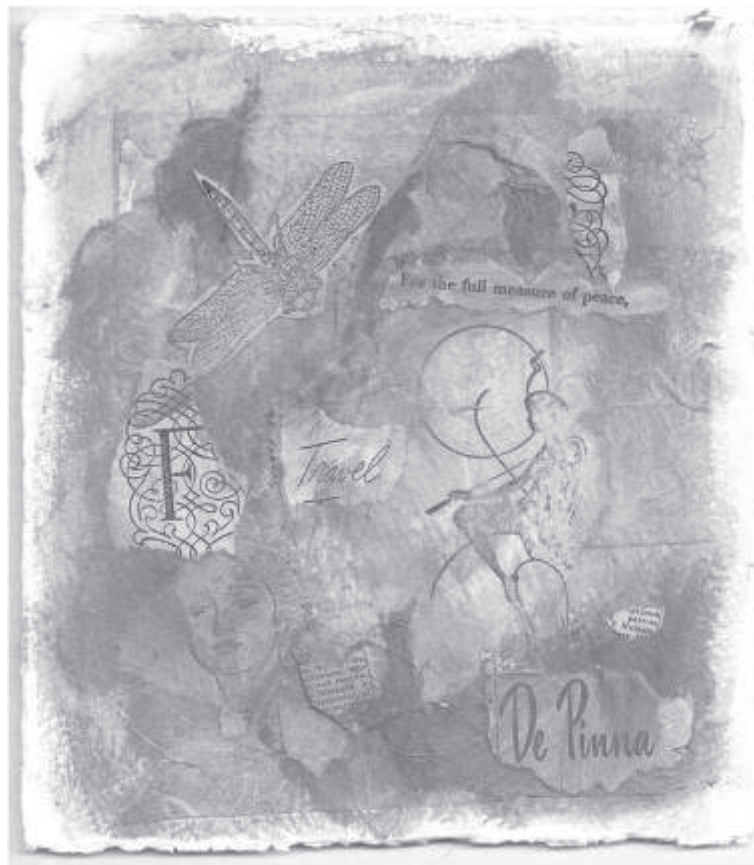
**Paradise Center for the Arts in Faribault, MN is looking for entries for their upcoming "car pARTs" juried exhibit, which will run from August 3 – September 23, 2012. Created pieces need to feature, portray or be related to cars. Work must be original, created within the last two years and may not exceed 4 feet in any direction. Two pieces may be submitted digitally at \$10/piece for PCA members and \$15/piece for non-members. Submission deadline June 8, 2012. Details at: <http://www.paradisecenterforthearts.org/gallery/car-parts-call-for-artists/>**

## Upcoming SMAHC exhibit features the artwork of Michele Skogrand

Michele Skogrand of Montevideo will exhibit her mixed media collage artworks at the SMAHC gallery (new location) from May 10 - June 29.

A 2011 SMAHC individual artist grant recipient, Skogrand has been exploring images of women using Jungian archetypes as well as popular modern stereotypes in the form of mixed media collage. She explains that women **“have been portrayed as temptress and angel, mother and old spinster, goddess and an empty vessel. While trying to understand my own femininity, I become fascinated by women’s studies and the wildly varying portrayals of women.”**

The public is invited to visit the gallery exhibit at the new SMAHC art gallery location (114 North 3rd Street, Marshall). Join us to visit with the artist at a reception from 5:00 PM - 7:00 PM on Thursday, May 10, 2012. *Regular Gallery hours are Monday - Friday, 8 am-12 pm and 1-4:30 pm.*



## SW MN ART GALLERIES to explore and enjoy

ARThouse, 117 1st Ave NE, New London

ARTmeyerson, 105 4th St. N., Atwater

Barn Theatre Art Gallery, 321 4th St. SW, Willmar

Carnegie Cultural Center, 205 N. Freeman, Luverne

Clay Coyote Pottery, 17614 240th St. Hutchinson

Hutchinson Center for the Arts, 28 North Main Street, Hutchinson

Kaleidoscope - An Artists' Gallery, 326 Main Street South, New London

KK Berge Gallery, 807 Prentice Street, Granite Falls

Marshall Area Fine Arts Council (MAFAC), 109 N. 3rd Street, Marshall

Milan Village Arts School, junction of Hwy 7/59 and Hwy 40, Milan

Nobles County Art Center, 407 12th Street, Worthington

Potato Eaters Gallery, 330 Litchfield Ave SW, Willmar

Robert Remick Gallery, 812 Fourth Avenue, Windom

SMAHC Art Gallery, 114 North 3rd Street, Marshall

Tokheim Pottery, 2057 361st Ave, Dawson

William Whipple Gallery at Southwest Minnesota State University, Marshall

Willmar Area Arts Council Gallery, 611 Fifth St. SW, Willmar

## SMAHC AWARDS \$2,500 IN ART STUDY OPPORTUNITY FOR YOUTH GRANTS

### Grants were awarded to:

Elizabeth Mangen, Willmar, \$500 to attend a St. Olaf musical theatre camp this summer.

Garret Hoff, Marshall, \$435 to attend the National Origami Convention in New York City.

Paul Benson, Willmar, \$500 to attend a St. Olaf summer music camp.

Eukariah Tabaka, Marshall, \$301 to attend the **Guthrie Theatre's "Broadway Bound" Summer Camp.**

Natalie Brouwer, Raymond, \$264 to attend pencil/drawing classes led by Karen Bell.

Nicole Brouwer, Raymond, \$500 to do a clay/ceramic pottery mentorship with Craig Edwards.

## APRIL CALENDAR

*\*\* Indicates the project was funded in part with a grant from the SMAHC with funds provided by the McKnight Foundation, the MN State Legislature, or the MN Arts & Cultural Heritage Fund as appropriated by the MN State Legislature with money from the vote of the people of Minnesota on 11/4/08.*

\*\*April 1 Nomination Deadline: SMAHC Prairie Star Award (honoring an outstanding artist ) and Prairie Disciple Award (honoring an outstanding arts advocate in education)

\*\*April 1 SMAHC Grant Application Deadline: Art Project Planning

**April 1 Area Juried Art Show Artists' Reception**, 1:00-4:00 pm at t Nobles County Art Center, 407 12th Street, Worthington.

\*\*April 3 **SW MN Orchestra, Children's Concert**, Schwan's Center for the Performing Arts at Marshall High School. 10:00 am and 1:00 pm.

\*\*April 5 SMAHC Art Project Grantwriting Workshop, 4:00 -6:00 pm SMAHC Office, 1210 E College Dr, Suite 600, Marshall.

April 12-14 "*The 39 Steps*", SMSU Main Stage Theatre, Marshall. All shows 7:30 pm except April 21 at 2 pm.

\*\*April 12-15 "Born Yesterday" performed at The Barn Theatre, 321 SW 4th Street, Willmar. 7:30 pm shows except Sunday matinee at 2 pm.

April 13-15 "*Sylvia*", Lake Benton Opera House, Lake Benton. All shows at 7:30 pm except Sunday matinees at 2 pm.

April 13-15 Opland Singers: "**We're Singing Your Songs**" at the Pipestone Performing Arts Center, 104 East Main St, Pipestone. Fridays & Saturdays 7:30 pm, Sundays 3:00 pm. Box Office: 507 825-2020. More info at [www.pipestoneminnesota.com/artscenter/](http://www.pipestoneminnesota.com/artscenter/)

\*\*April 14 "**Charlotte's Web**", Theatreworks USA, Memorial Auditorium, Dawson. 2 pm. Tickets \$8 for adults, \$5 for students, \$20 for family. More information at [www.dawsonboydarts.org](http://www.dawsonboydarts.org), 320-769-2955 Ext. 246, or [dbaa@dawsonboydarts.org](mailto:dbaa@dawsonboydarts.org)

April 14 Joyce Young Artist Reception, 11:00 am – 5:00 pm at the Hutchinson Center for the Arts.

**April 14 "Creative Evaluation Strategies" Workshop** on art project evaluation and reporting for arts organizations in Big Stone, Chippewa, Kandiyohi, Lac Qui Parle, Lincoln, Lyon, Pipestone, Swift, and Yellow Medicine counties, 10:00 am – 5:00 pm at the University of Minnesota-Morris.

\*\*April 16 SMAHC Grant Application Deadline: Arts in the Schools - Round II

April 19 Lunch Bunch, noon, at the Marshall Area Fine Arts Council, 109 N 3rd St, Marshall, **featuring Diane Wright's** Suzuki string students.

\*\*April 19-22 "Born Yesterday" performed at The Barn Theatre, 321 SW 4th Street, Willmar. 7:30 pm shows except Sunday matinee at 2 pm.

April 20 & 21 "*The 39 Steps*", SMSU Main Stage Theatre, Marshall. All shows 7:30 pm except April 21 at 2 pm.

April 20-22 "*Sylvia*", Lake Benton Opera House, Lake Benton. All shows at 7:30 pm except Sunday at 2 pm.

April 20-22 Opland Singers: "**We're Singing Your Songs**" at the Pipestone Performing Arts Center, 104 East Main St, Pipestone. Fridays & Saturdays 7:30 pm, Sundays 3 pm. Box Office: 507 825-2020. More info at [www.pipestoneminnesota.com/artscenter/](http://www.pipestoneminnesota.com/artscenter/)

\*\*April 20-22 Prairie Arts Chorale: Jazz Standards. April 20: 7:30 pm at Montevideo Fine Arts Center, 310 Eureka Ave., Montevideo. April 21: 7:30 pm at the Estebo Performing Arts Center (Redwood Valley High School), 100 George Ramseth Dr., Redwood Falls. April 22: 4:00 pm at Faith Lutheran Church, 310 Medayto Dr., Spicer.

\*\*April 20 & 22 Crow River Singers Spring Concerts. April 20 held at the Church of St. Anastasia, 460 Lake St. SW at 7 PM. April 22 held at Peace Lutheran Church, 400 Franklin St SW, Hutchinson at 2 PM.

\*\*April 21 Eric Taylor performs at the Carson Meeting House, 49521 Cty Road 3, Delft. 7:30 pm show. Hosted by the Prairie Wind Folk Music & Bluegrass Association.

**April 21 "Creative Evaluation Strategies" Workshop** on art project evaluation and reporting for arts organizations in Cottonwood, Jackson, McLeod, Meeker, Murray, Nobles, Redwood, Renville, and Rock Counties, 10 am – 5:00 pm at the University of Minnesota-Mankato.

\*\* April 21 Manfred 100<sup>th</sup> Birthday Event. Buffet Meal, 4:30 pm at the Blue Mound Banquet Center, Luverne. Authors of Siouland: Authors Freya Manfred, Thomas Pope, John Rezmerski, Joe Paddock, Nancy Paddock, Jim Heynen, & Scott King share their work in memory of Frederick Manfred, 7:00 pm at the Historic Palace Theatre, downtown Luverne. Tickets: Dinner Only \$20, Authors Only \$10, Dinner + Authors \$25.

\*\*April 22 "**Richie Lee and the Fabulous 50's**", MAFAC Concert, Schwan's Center for the Performing Arts at Marshall High School. 4 pm. More information at [www.mafac.net](http://www.mafac.net), or call 507-532-5463.



\*\*April 22 Crow River Area Youth Orchestra Spring Concert held at Hutchinson Middle School, 1365 S Grade Road, Hutchinson.

\*\*April 28-29 Prairie Arts Chorale Jazz Standards. April 28: 7:30 pm at Unity Christian Reformed Church, 510 6<sup>th</sup> St.. Prinsburg. April 29: 4:00 pm at St. Stephen Lutheran Church, 1301 S. 4<sup>th</sup> St., Marshall.

April 29 Big Stone Arts Council's Second Annual Community Gospel Concert, 2:00 pm at the Ortonville High School Auditorium, Ortonville. Free. An Afternoon Tea Reception will immediately follow the concert.

April 29 Willmar Area Symphonic Orchestra Young Artist Concert and Moody Blues Tribute: Days of Future Passed. [www.willmarorchestra.com](http://www.willmarorchestra.com).

**MAY CALENDAR**

\*\*May 1 SMAHC Grant Application Deadline: Individual Artist (Developing & Career) - Round II

May 5 SMAHC Artist Retreat on the shores of St. Andrew at "The Village", New London. Join fellow artists and subject matter experts at a fun-filled day of learning. 12 workshop sessions to be offered. Workshops run from 9 am through 5 pm with meals included. Check out the option to stay over on Friday night, May 4. \$20 for workshops & meals; (additional \$45 for optional overnight stay.) Register at [www.smahc.org](http://www.smahc.org) or call the SMAHC office: 800-622-5284.

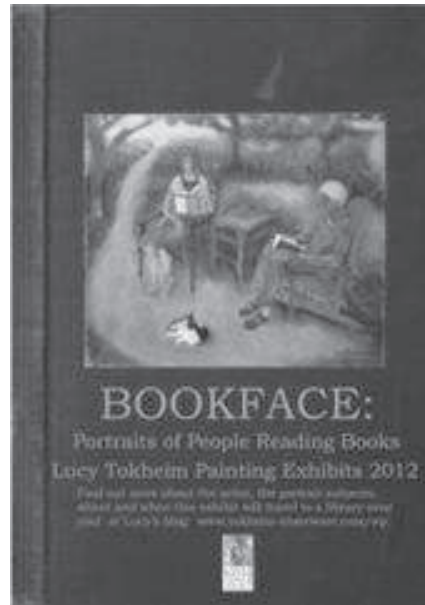
May 5 Mark Schultz in Concert at the Dassel-Cokato HS Performing Arts Center. This Dove Award winning artist **has become one of Christian music's best-loved** and most acclaimed singer/songwriters! 7:30 pm show. \$20 Adult, \$10 Youth. Reserved Seats. [www.dc.k12.mn.us/pac](http://www.dc.k12.mn.us/pac)

May 8-10 The Art of Hosting. Free workshop 9 a.m. - 5 p.m. held at Prairie's Edge Resort & Casino Granite Falls. The Art of Hosting is a training session for all who aspire to learn and find new ways for working with others to create innovative and comprehensive solutions. To register, call Dixie at the CURE office at 1-877-269-2873, or e-mail [dixie@cureriver.org](mailto:dixie@cureriver.org).

\*\*May 10 SMAHC Gallery Artist Reception featuring the work of Michele Skogrand of Montevideo. Visit with the artist from 5 - 7 PM at the SMAHC Gallery in Marshall.

\*\*May 12 SMAHC Grant Review Panel for Arts in the Schools Grants - Round II. SMAHC Office, 1210 E College Dr, Suite 600, Marshall.

\*\*May 15 SMAHC Grant Application Deadline: Art Project grants - Round III



*\*\*Lucy Tokheim completes SMAHC Legacy Grant for Career Artists*

“Have you ever observed the face of someone who is lost in a book?” Lucy Tokheim asks in her blog. She goes on to introduce her legacy grant project, “One day last winter I caught my husband reading Bill Bryson’s *A Walk in the Woods* during the middle of a work day in our pottery studio. I was struck by the novelty of this event, but even more so by the beautiful look of absorption on his face.

It inspired me to plan a series of paintings of people reading books. I love to draw and paint people, but it is very hard to get them to hold still while they are doing something interesting; asking them to read a book of their choice while I do a portrait of them seemed a brilliant solution to me.”

Lucy is a design artist with Tokheim Stoneware in rural Lac qui Parle County, Minnesota. Her ceramic design work inspired by Scandinavian folk art has been exhibited extensively in the Upper Midwest, at the New York Museum of Folk Art and in Norway. Lucy also loves to paint.

*Bookface Exhibit Begins its Travels*

Feb. 23 - March 21: Montevideo Library

March 22 - April 4: Appleton Library

April 5 - May 2: Marshall Library with an Artist Reception on April 5 from 5:30-7:30 pm

May 3 - May 31: Willmar Library with an Artist Reception on May 3 from 5:30-7:30 pm



SW MN Arts & Humanities Council  
 1210 E. College Drive, Suite 600  
 Marshall, MN 56258  
 Phone 507-537-1471 or 800-622-5284 toll free  
 www.smahc.org smahcinfo@iw.net

*Address Service Requested*

NON-PROFIT  
 ORGANIZATION  
 U.S. POSTAGE  
 PAID  
 MARSHALL, MN  
 PERMIT NO. 140

[www.smahc.org](http://www.smahc.org)

Grant guidelines, grant applications, arts calendar, news and contact info

*Has your membership expired?* If your address label shows that your membership has expired, this may be the last issue of VOICES you will receive in the mail. Please use the form at the bottom of this page to renew your membership now. If you prefer to receive VOICES via email, subscribe at [www.smahc.org](http://www.smahc.org) or contact the SMAHC office.

2011 BOARD OF DIRECTORS

Big Stone.....	Deb Larson	Lincoln .....	Kate Aydin	Pipestone.....	Open
Chippewa.....	Jane Link	Lyon .....	Paula Nemes	Redwood .....	Dan Wahl
Cottonwood .....	Marilee Strom	McLeod .....	Kathy Wnoroski	Renville .....	Tamara Isfeld
Jackson .....	Paul Grupe	Meeker .....	Susan Marco	Rock .....	Cindy Reverts
Kandiyohi.....	Connie Feig	Murray .....	Kelly Muldoon	<b>Swift</b> .....	Sydney Massee
Lac qui Parle .....	Randy Meyer	Nobles.....	Ellen Copperud	Yellow Medicine .....	Patricia Enger

STAFF

Executive Director.....	<b>Greta Murray</b>	Administrative Assistant .....	<b>Caroline Koska</b>
Program Assistant.....	<b>Nicole DeBoer</b>	Office Assistant.....	<b>Helene Devereaux</b>

SMAHC Membership Form

Join SMAHC today and have your money doubled! The McKnight Foundation will match dollar-for-dollar any new or increased donations to SMAHC! Help us earn our match.

Contributions are tax-deductible. Mail your membership donation to SMAHC, 1210 East College Drive, Suite 600, Marshall, MN 56258.

Name/Organization \_\_\_\_\_  
 Address \_\_\_\_\_ City \_\_\_\_\_ State \_\_\_\_\_ Zip \_\_\_\_\_  
 Telephone \_\_\_\_\_ E-mail \_\_\_\_\_ County \_\_\_\_\_

LEVELS OF PARTNERSHIPS:	\$500.00 + Benefactor	\$99.00 - \$50.00 Supporter
	\$499.00 - \$250.00 Patron	\$49.00 - \$ 25.00 Contributor
	\$249.00 - \$100.00 Sustainer	Business & Organizational memberships starting at \$50.00

*Please consider making a gift to SMAHC as a memorial or in honor of a birthday, anniversary or other special occasion.*